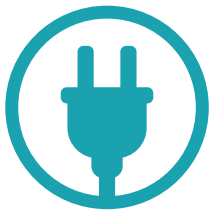


CONSTRUCTION EQUIPMENT

SUNWARD
INNOVATION LEADS TO VALUE



ELECTRIC
MEDIUM EXCAVATOR **SWE 240FED**

Engine Power: **120 kW**

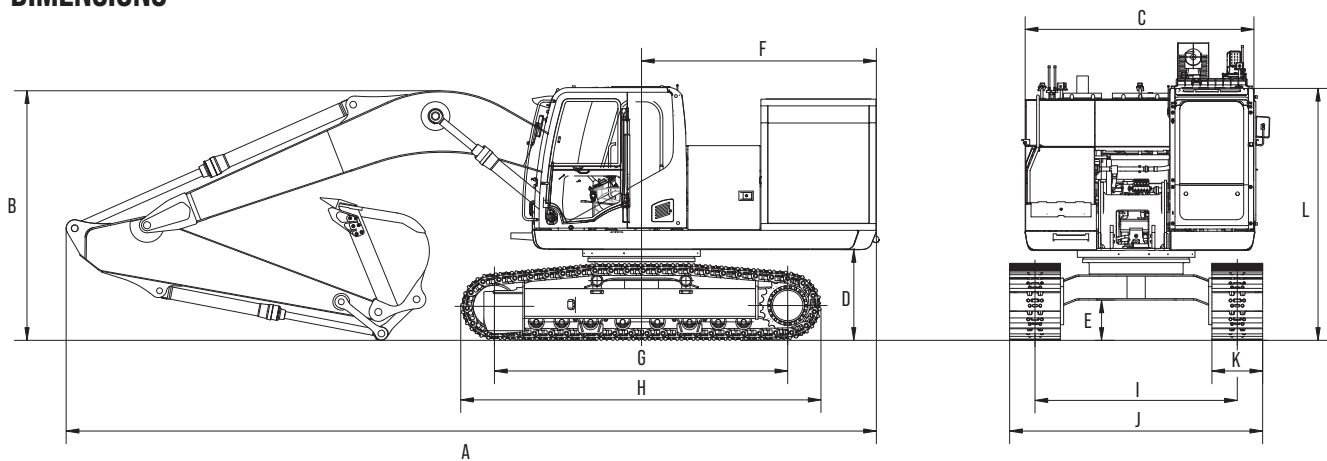
Machine Weight: **23 180 kg**



TECHNICAL PARAMETERS

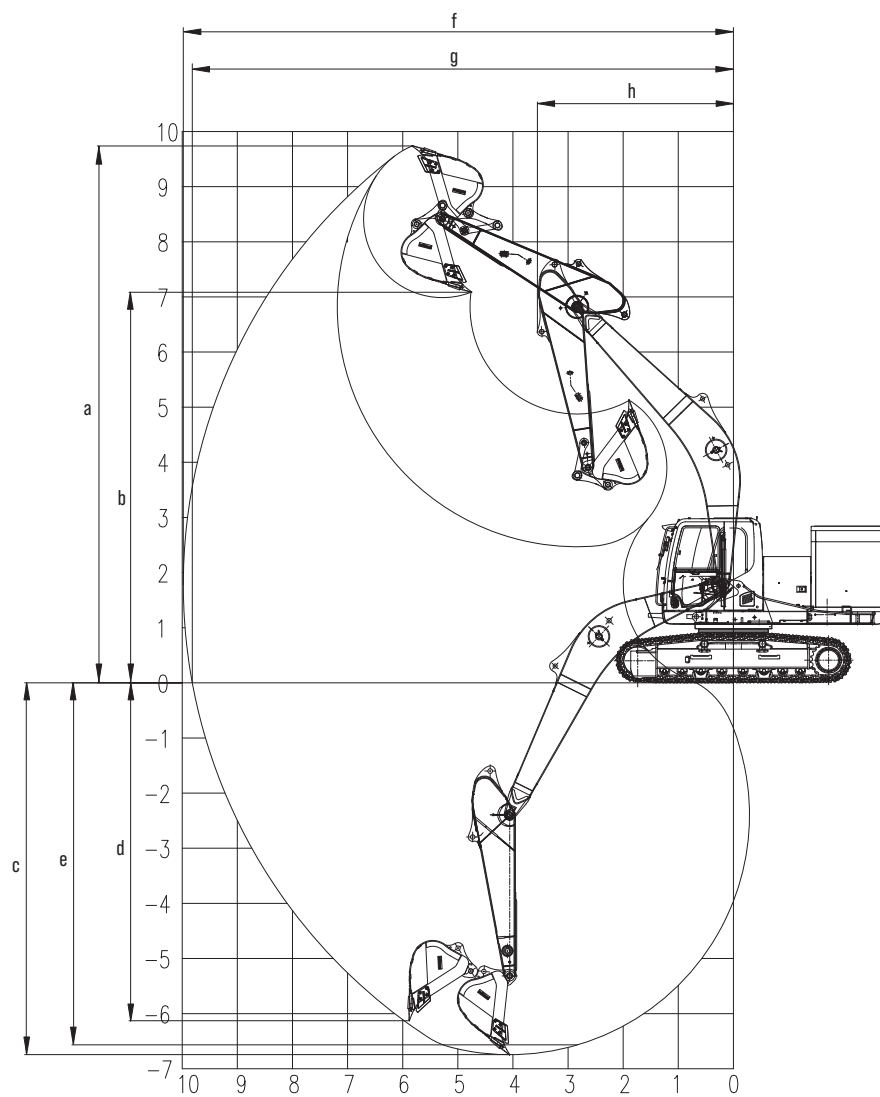
| | | |
|------------------------|--------------------------------------|--------------------------------|
| TYPE OF CAB | | Cab |
| BUCKET CAPACITY | | 1.0 m ³ |
| MACHINE WEIGHT | | 23 180 kg |
| DIMENSIONS | Overall dimension (L × W × H) | 9 650 × 2 990 × 3 318 mm |
| | A Total length | 9 650 mm |
| | B Total height | 3 318 mm |
| | C Upper structure width | 2 710 mm |
| | D Ground clearance of counter weight | 1 070 mm |
| | E Minimum ground clearance | 483 mm |
| | F Tail swing radius | 2 770 mm |
| | G Track length on the ground | 3 480 mm |
| | H Track length | 4 260 mm |
| | I Track gauge | 2 388 mm |
| | J Undercarriage width | 2 990 mm |
| | K Track shoe width | 600 mm |
| L Cab height | 3 061 mm | |
| POWER SOURCE | Battery type | Lithium-ion |
| | System voltage (DC) | 618.24 V |
| | Battery capacity | > 400 kWh |
| | Emissions | Zero emissions at point of use |
| MOTOR | Type | 3-Phase asynchronous |
| | Power | 120 kW |
| TRACK | Type | Steel track |
| | Track shoe width | 600 mm |
| UNDERCARRIAGE | Track length | 4 260 mm |
| | Traveling speed (High/Low) | 5.2/3.3 km/h |
| SWING SPEED | | 11.8 rpm |
| GROUND PRESSURE | | 50.4 kpa |

DIMENSIONS



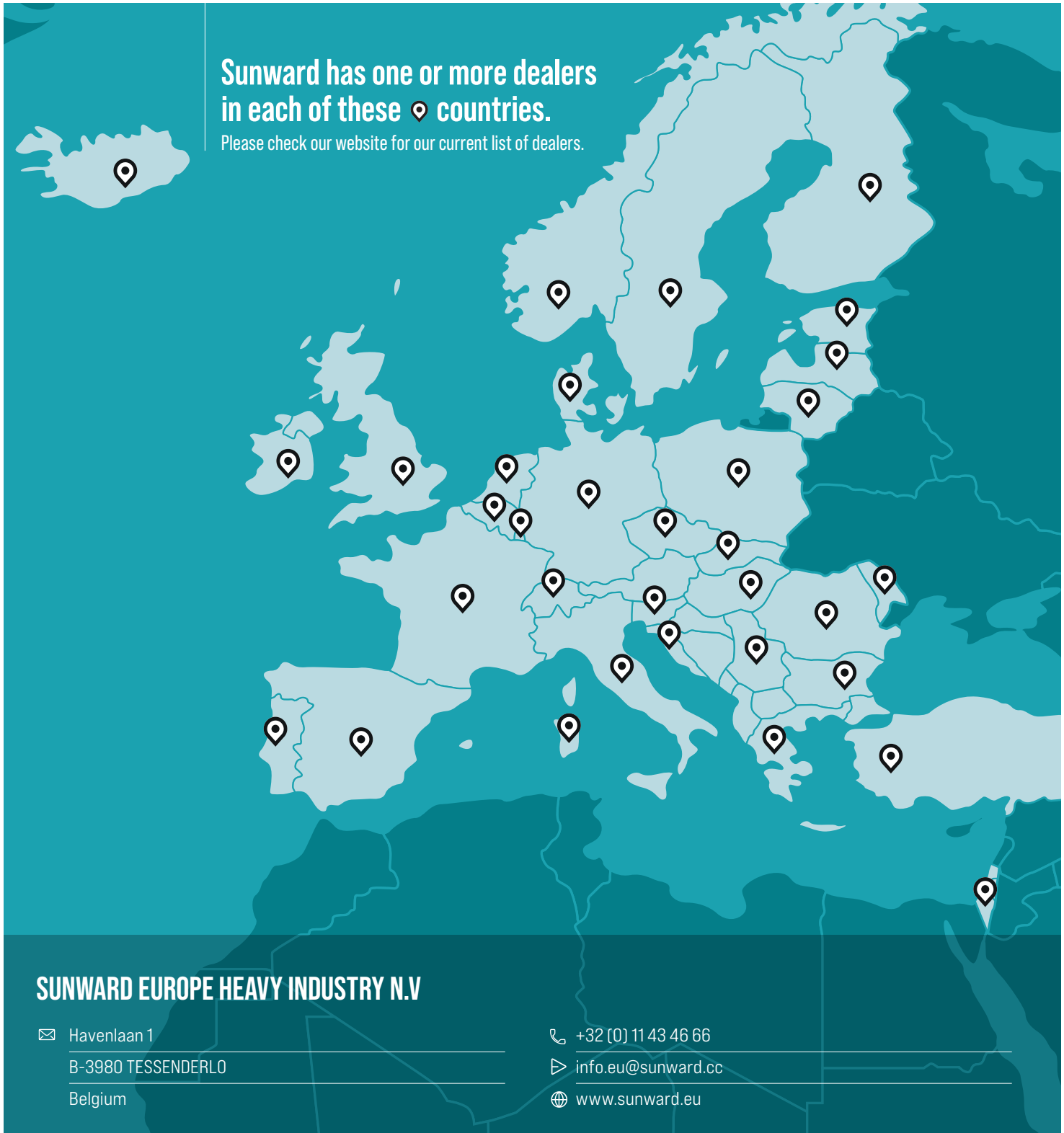
WORKING RANGE

| | | | |
|-----------------------------------|---|-----------------------------|----------|
| WORKING RANGE & BREAKOUT FORCE | a | Max. cutting height | 9 980 mm |
| | b | Max. loading height | 9 820 mm |
| | c | Max. digging depth | 4 850 mm |
| | d | Max. digging depth (2.4 m) | 5 795 mm |
| | e | Max. vertical digging depth | 6 750 mm |
| | f | Max. digging reach | 9 710 mm |
| | g | Max. reach on ground | 7 027 mm |
| | h | Min. front swing radius | 1 660 mm |



Sunward has one or more dealers
in each of these  countries.

Please check our website for our current list of dealers.



SUNWARD EUROPE HEAVY INDUSTRY N.V

✉ Havenlaan 1
B-3980 TESSENDERLO
Belgium

☎ +32 (0) 11 43 46 66
▶ info.eu@sunward.cc
🌐 www.sunward.eu

CE_EU_L3_SWE240FED-20220930_EN_EU

DEALER CONTACTS